

LD Seating



Lookbook

Lookbook 2025

Crafted with commitment

Index

Intro

04

Production

10

Arcus

20

FollowMe

24

Nido

28

Flexi family

34

Riva

44

Lotus

48

Sky Fresh

90

Trivi

54

Spot family

94

Melody family

60

Kubik Box

98

Funghi

70

Oslo family

102

Harmony family

74

Seance family

108

Lyra Air

82

References

112

Leaf

86

Stay in touch

122

LD Seating is a family-run business based in Boskovice, Czech Republic



We are committed to crafting seating that is backed by tradition, creativity and the drive to make something meaningful for future generations. We design, develop and produce our seating with an unwavering commitment to trust and reliability, ensuring that every chair we create reflects the care and integrity of our team, as well as the expectations of our global partners and customers. For over three decades, we have expanded our company through innovation and expertise, continually pushing the boundaries of what is possible in design and craftsmanship.

We believe in preserving the skill and creativity that define our work, while also integrating the latest technologies to enhance our products and ensure they stand the test of time. Founder Jitka Hurábová explains, “Our goal is for our clients to tell us in twenty years’ time that they have purchased an exquisite piece of furniture from us. I would like that very much”.


Our company is deeply rooted in family values and a commitment to both our staff and customers. We believe that fostering a supportive and inclusive environment is essential, encouraging every member of our team to explore and realise their full potential. By recognising the unique contributions of each person, we ensure that everyone has a valued and meaningful role within our company. As we continuously innovate and refine our approach to design, craftsmanship, production and sustainability, we remain confident that our traditional values will help guide us with purpose into the future.



Committed to Design



LD Seating partners with world-class designers to create seating that meets the highest standards of quality. Renowned names, such as Andreas Krob, Orlandini Design, Martin Ballendat and Baldanzi & Novelli, have shared their expertise and creative insight, earning prestigious awards like the Red Dot Design Award, German Design Award and iF Design Award. These collaborations guarantee that each piece is thoughtfully designed to satisfy even the most demanding clients.



While automated production can improve aspects of manufacturing, we remain committed to the skill and expertise of our team. Our master craftsmen produce essential seating components, maintaining top quality. Our seamstresses and upholsterers apply precise handwork to ensure every fabric element is perfectly fitted. It's the experience and dedication of our team that are at the heart of our process, where personal touch and attention to detail create seating built to last.

Committed to
Craft

Committed to Innovation

Using the latest technologies to support their skills, our state-of-the-art manufacturing facilities are designed to empower our team to excel. From foam-making to our bespoke paint shop and metalworking division, we use specially designed equipment to push the limits. By combining cutting-edge tools with skilled workmanship, we enhance innovation and boost production capabilities, ensuring every piece we create meets our benchmarks for quality and creativity.



Committed to **Sustainability**

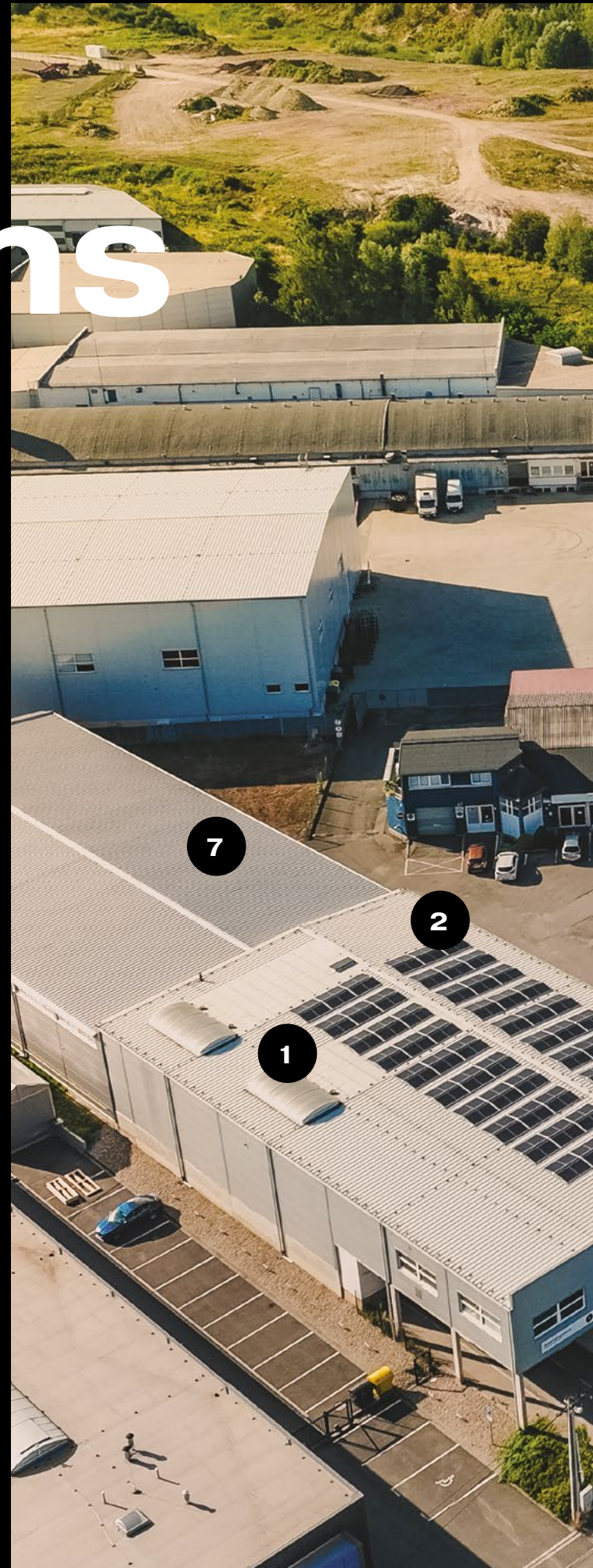
We design and manufacture each chair with a strong commitment to environmental responsibility, starting with durable, high-quality seating that lasts for decades, reducing the need for replacements and conserving materials and energy. Our sustainable practices, recognised by the FSC® 184700 certificate and EMAS certification, prioritise recycled and natural materials, including fabrics with EU Ecolabel or Cradle to Cradle certifications and leather from the food industry. We've also installed photovoltaic panels for energy self-sufficiency and are moving toward a zero-waste approach by repurposing leftover fabrics into gift items like bags and cases, as well as creating Block toy building kits from foam trimmings.

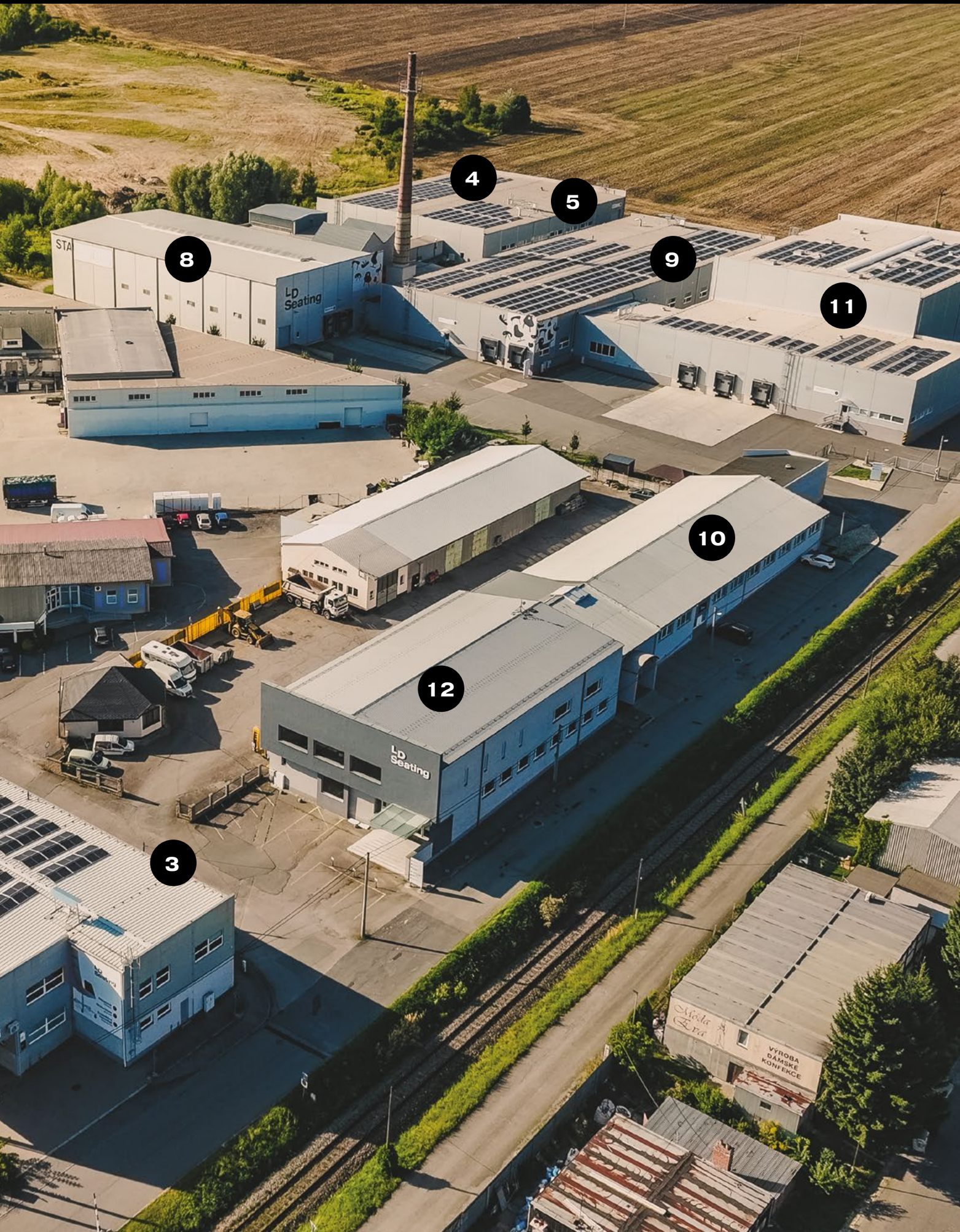
Our operations

At our Boskovice facilities, we design, craft, and manufacture many key seating components, ensuring sustainable production and minimising our carbon footprint. Our dedicated team of craftsmen, seamstresses, upholsterers, assemblers and engineers, as well as quality control and logistics experts work together to ensure that every chair meets the highest standards of quality.



Our subsidiary, **PUR seating**, has embarked on an ambitious expansion into new facilities designed to enhance production and storage capacity. Established three years ago in collaboration with the renowned Italian company Essepieffe, a leader in European manufacturing with over 30 years of experience, **PUR seating** serves as our polyurethane foam shell manufacturer. This strategic partnership provides us with invaluable expertise, enabling us to produce top-quality products.





1
Fabric cutting

2
Automatic
embroidery

3
Sewing
workshop

4
Metalwork

5
Paintshop

6
PUR foam
production

7
Hand
upholstery

8
Component
storage

9
Assembly

10
Auxiliary
production

11
Dispatch
storage

12
Showroom
& Office

Fabric cutting




We rely on the handiwork of experienced seamstresses and use technology to amplify their expertise. With their oversight, we use cutting-edge machines to precisely cut fabrics for all chair types. This approach minimises waste and ensures perfectly aligned cuts through computer programming.



The sewing and upholstery workshops lie at the core of our production process. Thirty-five talented seamstresses focus on the finest details, ensuring that every fabric is flawlessly fitted to the chair frame. At this stage, machines step aside – it's the expert hands, experience and dedication of our craftspeople that bring the precision required.

Sewing

PUR foam production



Since 2021, we've been manufacturing the majority of our chair fillings in-house using polyurethane foam at our subsidiary, PUR seating. Beyond our own seating, we also have the capability to foam seats for buses, trains, children's seats and medical beds. This is all thanks to the expertise of our skilled team and the use of advanced technology.




The chair cover is fitted seamlessly, free of any folds, enhancing the chair's overall design. This is done in our upholstery workshop, where skilled workers handle the detailed and labour-intensive craftsmanship required.

**Hand
upholstery**

Metalwork



We manufacture our own steel bases, steel inserts for full-foam shells and other metal components. This is made possible through our subsidiary, KOV seating, where we utilise technologies, such as automatic welding machines, to shape and work with metal in innovative ways.



In our powder coating shop, we personalise and perfect chairs to match client preferences. With a full range of colours from the RAL chart, we can paint bases, crosses and armrests in any combination the customer chooses.

Paintshop

In our assembly division, the frames and components are put together to form the finished chairs. The upholstered shell is mounted onto a base or cross, with armrests and additional accessories added as required. Every chair is thoroughly inspected and tested before being carefully packed and shipped to our customers.



Assembly



Final product

We ensure that each and every chair meets our strictest standards before reaching the client, guaranteeing top-tier quality and durability. Our dedication to excellence means that every final product reflects our commitment to craftsmanship and reliability.

Arcus



reddot winner 2023
office design



GERMAN
DESIGN
AWARD
WINNER
2024

The award-winning **Arcus** task chair intersects design and functionality. Its backrest is carefully designed to follow the natural curve of the spine, with adjustable lumbar support that lets you customise the fit to your specific needs. Crafted with your comfort in mind, **Arcus** strikes the perfect balance between support and flexibility for a truly tailored seating experience. The **Arcus** series also includes conference models that perfectly complement the task chairs, making them ideal for meeting rooms.





Design by Martin Ballendat





FollowMe

FollowMe stands out with its sleek, modern design, but it's the innovative, flexible backrest that truly sets it apart. The backrest intuitively adapts to every movement, offering support without the need for complicated adjustments. Its slightly elevated seat promotes the natural S-curve of your spine, so you can maintain good posture without lumbar support or conscious effort. The result is a one-of-a-kind chair that delivers natural, responsive back support. The special edition with bold red accents makes it especially appealing to gamers.





Design by Andreas Krob





Nido

Nido reimagines seating with a versatile solution that enables you to easily match your space to your vision. Its modular design allows Nido to effortlessly transform, offering one- to three-seat configurations, customisable backrests and two base options. Plus, **Nido** is crafted entirely at our Boskovice facilities, ensuring a minimal carbon footprint through zero CO₂ emissions in component delivery. Our configurator can help inspire you to create the perfect seating arrangement, making **Nido** the heart of any lounge.





Design by Orlandini Design











Flexi

family



The **Flexi family** is a truly versatile collection with a range of seating options for a variety of spaces. The **Flexi Chair's** distinctive backrest creates a modern silhouette, and can brighten any space with a wide choice of colour options and customisable upholstery. The **Flexi Light** conference chair features a flexible backrest for comfort during long meetings. **Flexi Lounge** includes wing chairs that combine unique design and comfort, while the **Flexi P** armchair, with backrest handles, is perfect for cafés, libraries and homes. Adding a bit of playfulness, the **Flexi Swing** suspension chair is available as either a ceiling-suspended or freestanding swing, making it ideal for coworking spaces, corporate relaxation areas and stylish cafés.





Design by Orlandini Design



Flexi family













Flexi Light



Riva

If you're on the hunt for the perfect chair, **Riva** has it all. **Riva** brings incredible versatility and comfort, featuring a luxuriously fully upholstered version that combines elegance with cosiness. You can also opt for a sleek all-plastic design or a plastic option with an upholstered seat. Pair it with your choice of wooden, steel, plastic, nylon or aluminium bases, and you've got endless possibilities. With its modern design and nearly limitless options, **Riva** isn't just another chair – it's the piece that brings warmth and style to any room.









Lotus

The **Lotus** collection of conference chairs and bar stools draws inspiration from the elegance of a blossom. Featuring moulded wooden parts with graceful concave and convex lines, each chair has a distinctive gap between the backrest and seat – echoing the form of a lotus flower. Crafted from sustainably sourced wood and available in oak or walnut veneer, **Lotus** offers an affordable and stylish seating solution for uplifting cafés, dining rooms and restaurants.





Design by Martin Ballendat







ESPRESSO	3.00	ESPRESSO	3.00
AMERICANO	3.20	AMERICANO	3.20
CAPPUCCINO	3.40	CAPPUCCINO	3.40
LATTE	3.60	LATTE	3.60
FLAT WHITE	4.00	FLAT WHITE	4.00
HOT CHOCOLATE	3.40	HOT CHOCOLATE	3.40
TEA	3.60	TEA	3.60







Trivi



reddot winner 2022
furniture design



BIGSEE
WOOD DESIGN
AWARD 2022
WINNER

Trivi blends understated design with comfort and durability, elegantly merging the natural warmth of wood with the smooth metal crafted at our Boskovice facilities. Offered as a low chair and two styles of bar stools, **Trivi** enhances the ambiance of cafés, meeting rooms or any spaces where style and quality are a priority. The wood used for the shells is sourced from sustainable sources, and together with its versatile design and in-house metalwork, **Trivi** achieves the ideal balance of environmental responsibility, form and function.



Design by Martin Foret









ESPRESSO	\$ 9	\$ 12
AMERICANO	\$ 9	\$ 12
CAFE MOCHA	\$ 10	\$ 12
CAFE LATTE	\$ 10	\$ 12
CAPPUCCINO	\$ 10	\$ 12
CARAMEL MACCHIATO	\$ 10	\$ 12
MINT CHOCOLATE	\$ 10	\$ 12
VANILLA LATTE	\$ 10	\$ 12
WHITE BREW	\$ 10	\$ 12
MANGO TEA	\$ 10	\$ 12
PEPPERMINT	\$ 8	\$ 10
GINGER	\$ 8	\$ 10
LEMON	\$ 8	\$ 10
JASMINE	\$ 8	\$ 10
CAMOMILE	\$ 8	\$ 10
BLACK TEA	\$ 8	\$ 10



Melody

family





The **Melody collection** intersects minimalist design, comfort and sophisticated craftsmanship. **Melody Design** models stand out for the elegant upholstery, available with hidden synchronous mechanics for upscale offices, or without, ideal for co-working spaces and trendy cafés. **Melody Lounge** adds luxury with fully-upholstered armchairs and optional footstools, perfect for public or home interiors. The **Melody Meeting** chair highlights refined contours with its expertly finished seat and backrest upholstery, an excellent choice for conference rooms, cafés and corporate environments. Meanwhile, the **Melody Office** task chair combines ergonomic design and style, making it perfect for offices.



Melody Design



Melody family















Funghi



With its unique mushroom-inspired design and a variety of shapes and sizes, **Funghi** is a great solution for adding a splash of vibrancy to any space. Lightweight and easily movable, **Funghi** effortlessly adapts to your seating needs. You can select from two sizes, an assortment of fabric types and colours for the upholstery, as well as white, black or grey options for the plastic base. With customisable options for both the cap and stem, **Funghi** fits perfectly into any office, open area, reception space or relaxation zone, adding a creative flair wherever it's placed.



Design by Filip Streit







Harmony

family





Design by Baldanzi & Novelli

Harmony Modern is a new classic that captures timeless design, exceptional comfort and fine craftsmanship. Its understated design fits into any modern space and its superior ergonomics ensure that comfort is never compromised, whether in a luxury office, upscale restaurant or a formal setting. **Harmony** prioritises comfort and support, making it ideal for those who value both style and functionality. The entire **Harmony family** is crafted with attention to detail, embodying a level of quality that stands the test of time. The refined lines and carefully selected materials speak to a sophisticated taste, elevating any space it is set in.

Harmony Modern



Harmony & Harmony Modern









AlvarAalto
MODERN WOMEN I



Lyra Air

The **Lyra Air** task chairs blend comfort and style with superior ergonomics, bringing a sophisticated touch to any office or home workspace. Each chair features a comfortable upholstered seat, a breathable mesh backrest and adjustable lumbar support for optimal comfort. Choose from bold colours like sage green and brick for the plastic components, mesh backrest, upholstered seat and aluminium base, or explore refined options in white and black for the plastic components. With a variety of accessories available, the **Lyra Air** series is a versatile choice for any work environment.









Leaf

The **Leaf** series is an extensive collection of task and conference chairs that are defined by their elegant, gently curved forms. The name **Leaf** perfectly captures the distinctive backrest design, shaped to mimic a tree leaf. Every **Leaf** chair features a spacious, comfortable upholstered seat. Designed to accommodate the unique needs of each user, the **Leaf** series meets the highest standards of functionality, ergonomics and style. Ideal for modern offices and meeting rooms, **Leaf** chairs bring a blend of nature-inspired beauty and comfort to any workspace.









Sky Fresh



Sky Fresh is designed to fulfil all your seating needs. With its modern, fresh and practical design, this collection complements any interior. Available in elegant, neutral plastic colours, fully upholstered options or with just an upholstered seat, **Sky Fresh** offers a versatile range of models, from sleek dining chairs and high bar stools to swivel chairs and conference seating. Perfect for dining rooms, restaurants, or conference rooms, **Sky Fresh** brings style and functionality to any space.





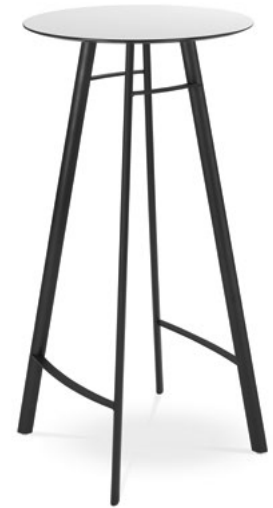


Spot

family

The **Spot collection** may be minimalist, but it exudes versatility. With chairs in sleek wood or comfortable upholstery, it offers a stylish seating option for cafés and bars. The collection also includes two- and three-seater benches, ideal for waiting rooms and conference halls. The **Spot Tables** are designed to suit any space, featuring a variety of table types and coffee tables in different heights. While minimalism defines this collection, the vibrant base colour options can enliven any space, making it the perfect choice for those who value both simplicity and flair.









Kubik Box



The **Kubik Box** series provides privacy and versatility in one package. Suited for large open offices and public spaces, the one- to three-seater units can be connected with padded walls to create cosy, enclosed assemblies. Each unit offers a comfortable stool, a support pillow and an upholstered wall, allowing you to mix and match colours for a personalised touch. Add an electrical outlet to power your devices and complete the enclosed space with a table. With **Kubik Box**, you can transform any area into a private retreat.







Oslo

family



Where comfort meets minimalism, the **Oslo collection** showcases a clean design and sleek silhouette across all its seating options. The **Oslo** series includes fully upholstered chairs with various base choices, providing refined and comfortable seating for contemporary offices, conference rooms and waiting areas. The **Oslo Lounge** range offers a single-seater armchair and a two-seater sofa, both with wood or metal base options. While offering ample space, comfort and cosiness, the seating still maintains a streamlined, slim profile and compact form.

Oslo & Oslo Lounge











Seance

family

Seance Art is the pinnacle of utility, thoughtfully designed to suit a wide variety of purposes and environments. Its robust construction and exceptional durability make it an excellent choice for conference halls and public spaces. The stackable design adds to its flexibility and convenience. **Seance Care** is just as versatile, offering fully upholstered seating that also works well for conferences or as supplementary seating alongside task chairs. Thanks to its adaptability and functional appeal, the **Seance collection** brings both style and practicality to any working environment.



Seance Art







A welcoming way to relax



Spot



Spot

eMag-Extreme Digital occupies 3,800 m² across two floors in the southern wing of the Liberty complex in Budapest. Accessible from the main entrance on Könyves Kálmán körút, the office space meets the developer's high standards, featuring modern amenities, such as communal areas and a private terrace.

Each floor of the eMag-Extreme Digital offices has shared spaces, like lounge areas, dining rooms and cosy café corners. In the lounge zones, employees can unwind in our Flexi Swing chairs. The dining rooms and café corners are outfitted with our Trivi chairs and Spot bar stools, offering a welcoming and eye-catching space for breaks.

Photo: Bravosincord

Trivi



Inspiring drive and downtime



Funghi FlexiP Arcus Club Spot Tables



Funghi

Accelapps' offices, located in the Ingstav building in Brno, were designed to create a friendly and inclusive workspace where employees can feel relaxed. Architect Petra Svadbíková, who led the interior design, focused on fostering a family-like environment with open, connected workspaces while still ensuring privacy for everyone.

The new offices are furnished with our seating to create a warm and playful atmosphere. Workstations are equipped with Arcus swivel chairs and Funghi stools, the meeting room features Flexi Light conference chairs and the kitchen is outfitted with Trivi barstools. A few Spot Tables have been placed throughout the offices, complemented by Flexi P chairs and Club seating for cosy places to relax.

Architect: Ing. Arch. Petra Svadbíková Photo: Oldřich Hrb



Arcus Funghi

A hundred chairs for a historic restoration



Trivi



Trivi

After standing unused for decades, the Žatec synagogue and rabbi's house have been fully renovated since 2020. Owned by Daniel Černý, the synagogue – the second largest in the country – and the nearby rabbi's house were restored with the help of the EU's IROP programme and co-funding from the owner.

Once restored, the synagogue will become a vibrant cultural venue, hosting exhibitions, concerts, theatre performances, lectures and a museum dedicated to the Jewish history of Žatec. To support this transformation, we've supplied one hundred of our Trivi chairs, ensuring that the space is functional and inviting for its future events.

Trivi



Photo: Marek Ondráček

Co-working with style



Club

Club



Architect: Vlastimil Páček

Škoda Auto's Prague-Vysočany office, located in the modern AFI City 1 tower, features a range of our seating options. This 75-metre, five-storey building, primarily for IT staff, offers contemporary interiors focused on low operating costs, sustainability and a healthy work environment.

Škoda Auto's offices span over 4,700 m² across five floors, designed to the latest standards to create an attractive co-working atmosphere. We furnished the meeting rooms with Flexi Light conference chairs and Dream+ chairs. In the café and lounge areas, our Club modular system – featuring armchairs, sofas and ottomans – creates comfortable and stylish spaces for relaxing.

Flexi Light



Czech officials seated in comfort



Harmony Modern



Harmony Modern



The Straka Academy, a grand Neo-Baroque building, serves as the seat of the Czech government. Since 1993, it has been home to the country's administration and underwent a recent refurbishment to preserve and modernise its interiors.

As part of the updates to the Czech Government Office, our Harmony Modern swivel chairs help make government officials comfortable during important meetings at the Straka Academy in Prague. With a design that balances elegance and ergonomics, these chairs offer lasting support, keeping officials comfortable even during long discussions.

Harmony Modern

Stay in touch



Visit our website
ldseating.com.



Follow us on [Instagram](#),
[Facebook](#) and [LinkedIn](#).



For pCon data, contact
us at info@ldseating.com.



Find 3D models
at ldseating.com.





Crafted with commitment

Creative concept: Seabrook Studio & LD Seating Design: Petr Kincí Visualisations: Allcity / Unwrap / Petr Bartoš Photos: LD Seating archive, Pavel Vopálka,

Oldřich Hrb, Roman Nguyen, Michael Tomeš, Martin Řezáč, Marek Ondráček, Epicture, Boys Play Nice Print: HRG v 2025-1

Idseating.com

**Crafted with
commitment**